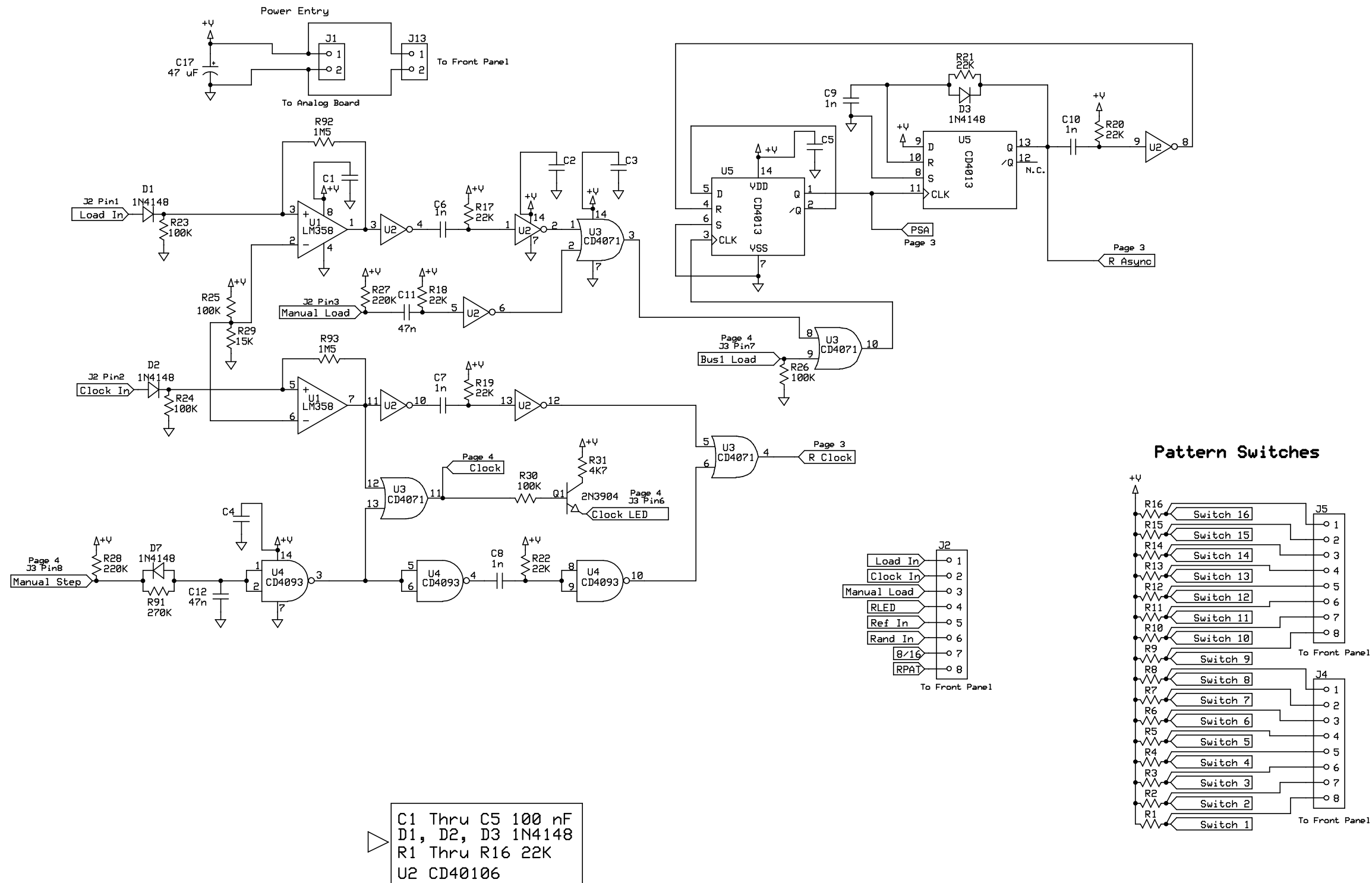
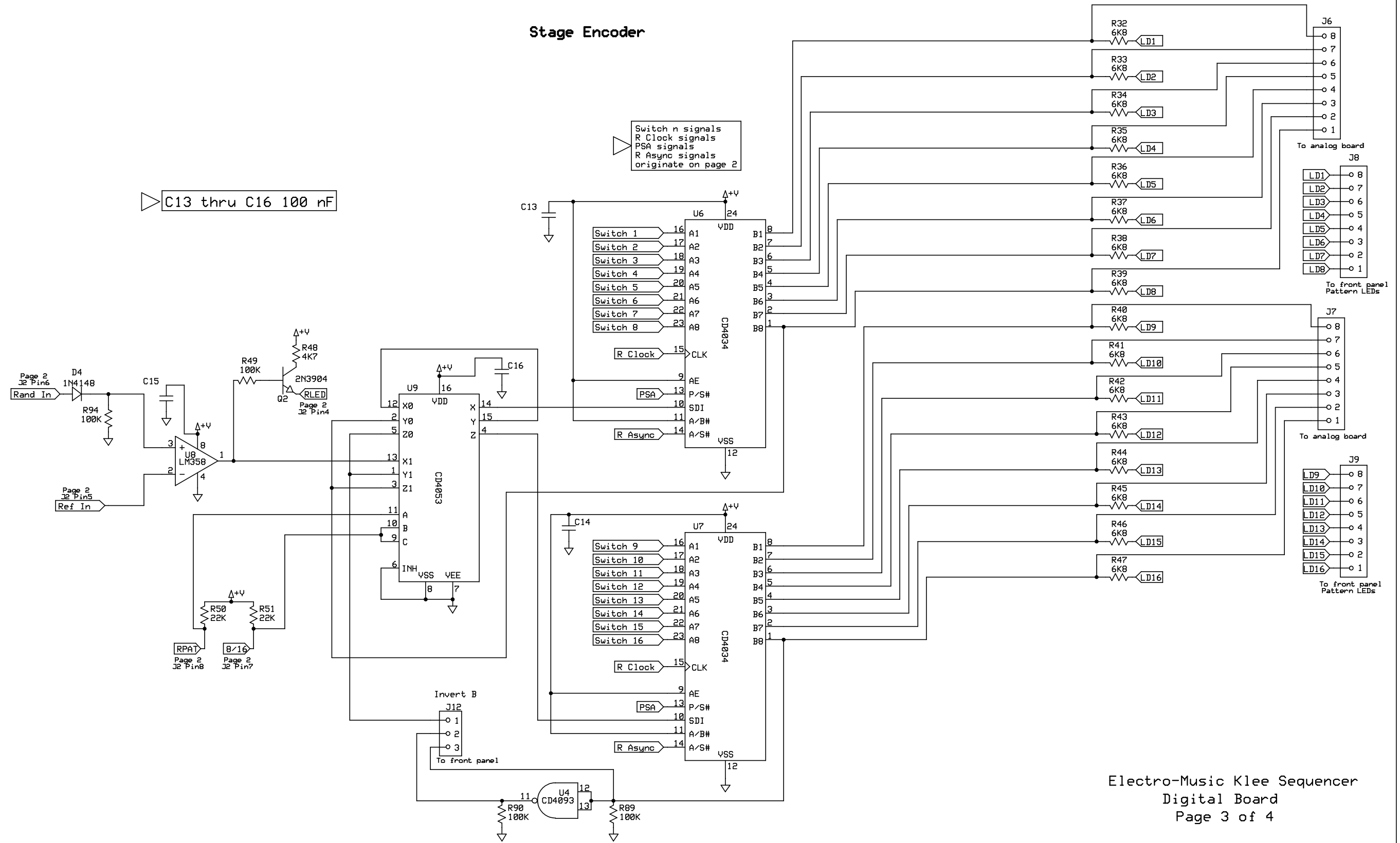




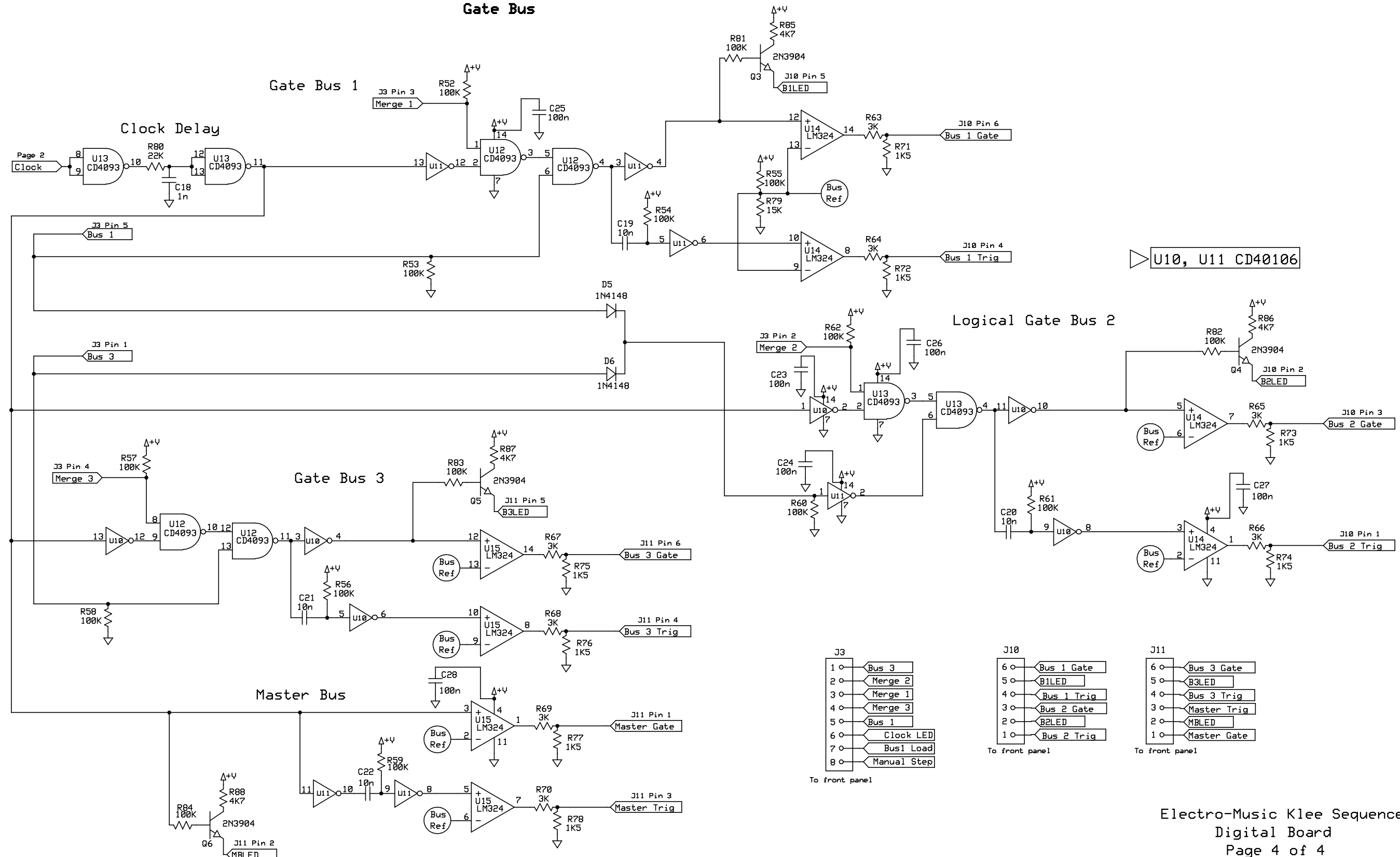
## Clock and Load



## Stage Encoder



# Gate Bus



Mnemonic	Literal	Pg.
Max V	Maximum Range Voltage	2,3
Ret A	Glide Pot A Tap	4
Ret AB	Glide Pot A+B Tap	4
Ret B	Glide Pot B Tap	4
Send G A	Top of Glide Pot A	4
Send G AB	Top of Glide Pot A+B	4
Send G B	Top of Glide Pot B	4
Step Mix A	Register A Mixed Voltage	3,4
Step Mix B	Register B Mixed Voltage	3,4

Revision History

1.00	Original Release
1.10	Document Clean-Up and Correction Change R26-R29 from 10K to 150K Change R34-R37 from 1K to 10K
1.11	Document Clean-Up and Correction
1.12	Document Clean-Up and Correction
1.20	Changed J14 to W1, deleted J14 Changed R29 from 150K to 60K Added W2 and J16 to Scaler Added D30 to Scaler
1.21	Changed W2 from 3 pin to 2 pin Added W1 note to page 4 Added labels to J1, J3, J5-7, J13
1.22	Added R58 to page 3 Changed R33 from 2K2 to 1K

Board Series Reference Designator Prefix 200 On All Interconnect Diagrams

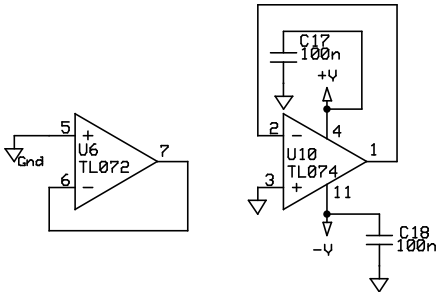
Highest Reference Designator Used

C20  
D30  
J16  
R58  
U10  
W2

Reference Designators Not Used

J14

Unused IC Sections

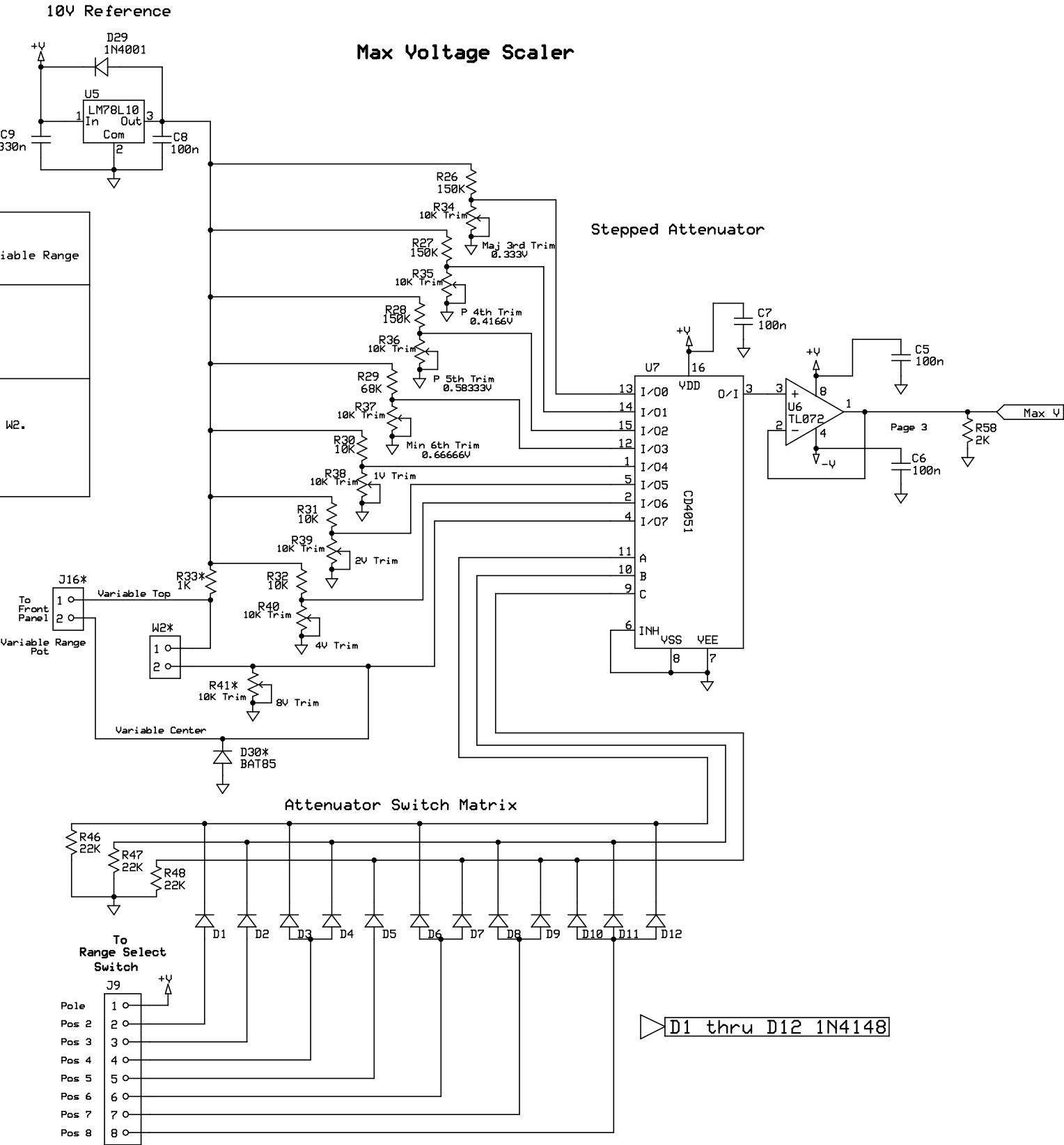


▷ Note: All 100K Resistors On This Schematic Are Specified as 0.1%

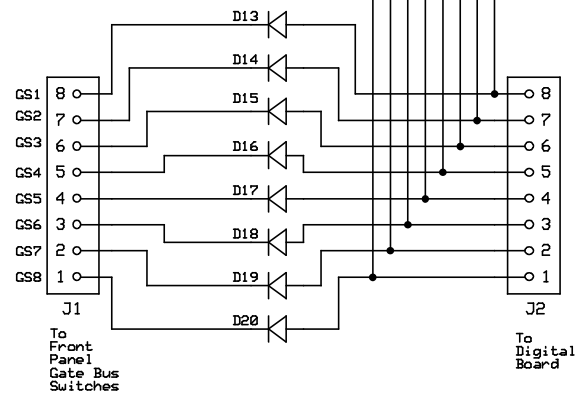
Electro-Music Klee Sequencer  
Klee Analog Board  
Revision 1.22

(c) 2007 Tom Bugs  
Tom Fenn  
William Manganaro  
Andrew Sharp  
Scott Stites

<p><b>*Variable Range Control Option</b></p> <p>Value/use of all parts marked "*" depend on if the Variable Range Control Option is implemented or not.</p>
<p><b>Implementing Standard Fixed Range</b></p> <p>Use values depicted on schematic. Install jumper between pads 1 and 2 of W2. Installing J16 not required. Installing D30 not required.</p>
<p><b>Implementing Variable Range Control Option</b></p> <p>OMIT (do <u>not</u> install) R41. OMIT (do <u>not</u> install) jumper between pads 1 and 2 of W2. Install J16. Install D30 Select value for R33 to determine max variable range (refer to build documentation).</p>

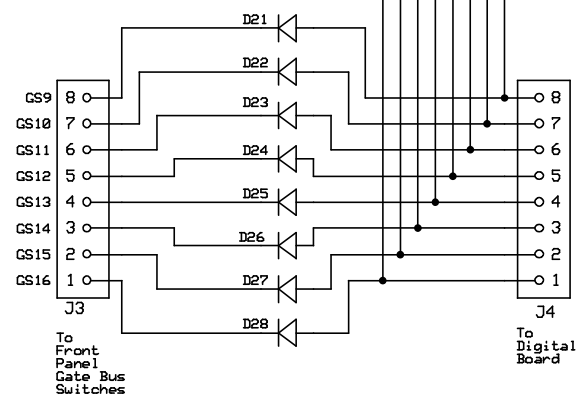


# Gate Bus Diodes



D13 thru D28 1N4148

# Gate Bus Diodes



## Step Decoder Stage Activation

Page 2  
Max V

C1  
100n

C2  
100n

C3  
100n

C4  
100n

Pot Top

J5  
To Front Panel Programming Pots

Pot Top

J6  
To Front Panel Programming Pots

Pot Center

J7  
To Front Panel Programming Pots

Pot Center

J8  
To Front Panel Programming Pots

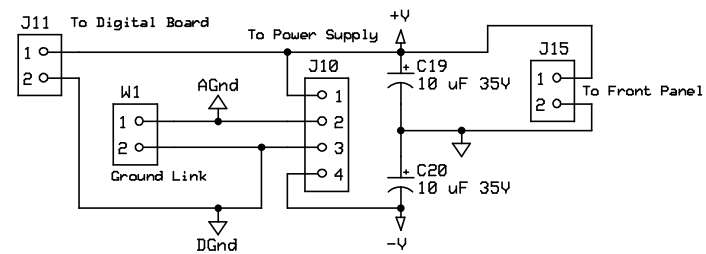
R1 100K  
R2 100K  
R3 100K  
R4 100K  
R5 100K  
R6 100K  
R7 100K  
R8 100K

R9 100K  
R10 100K  
R11 100K  
R12 100K  
R13 100K  
R14 100K  
R15 100K  
R16 100K

Page 4  
Step Mix A

Page 4  
Step Mix B

! Install a jumper between pads 1 and 2 of W1 if the power supply has only 1 ground feed.



## Output Voltage Mixer

