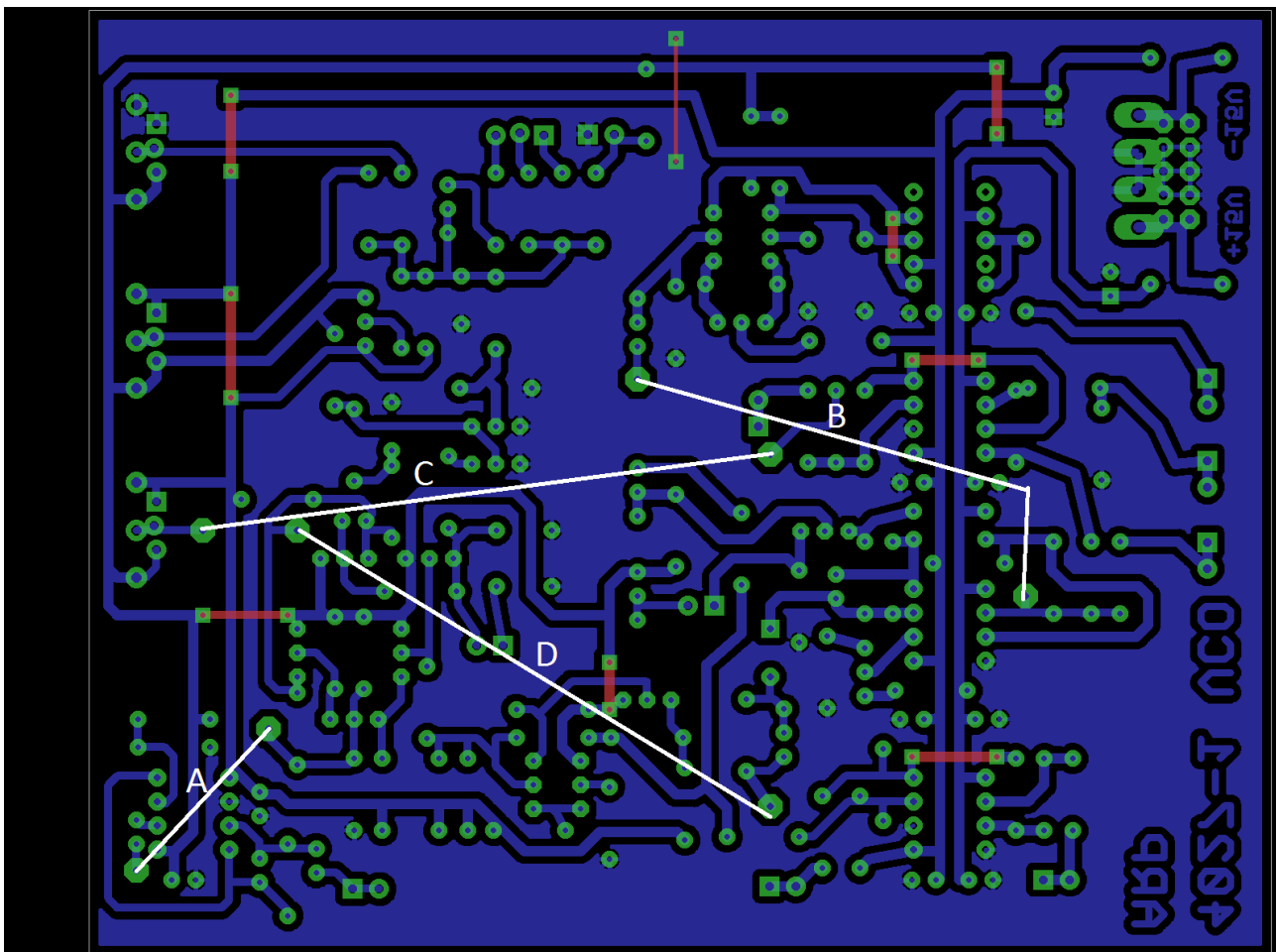


Parts Placement Diagrams

Jumpers

- ⌚ All red connections require a wire jumper on the PCB
- ⌚ Four Longer wire jumpers had to be used on the PCB. These are labelled A,B,C & D. The jumper names are also used in the parts placement and schematic documentation.
- ⌚ A = sync
- ⌚ B = Triangle wave output to Sine Wave-shaper Input
- ⌚ C = PWM Control Pot Jumper
- ⌚ D = VCO Reset pulse to Triangle Wave-shaper glitch removal



Parts Placement - Names

- 🕒 Schematic part names Diagram
- 🕒 use to compare against schematic

