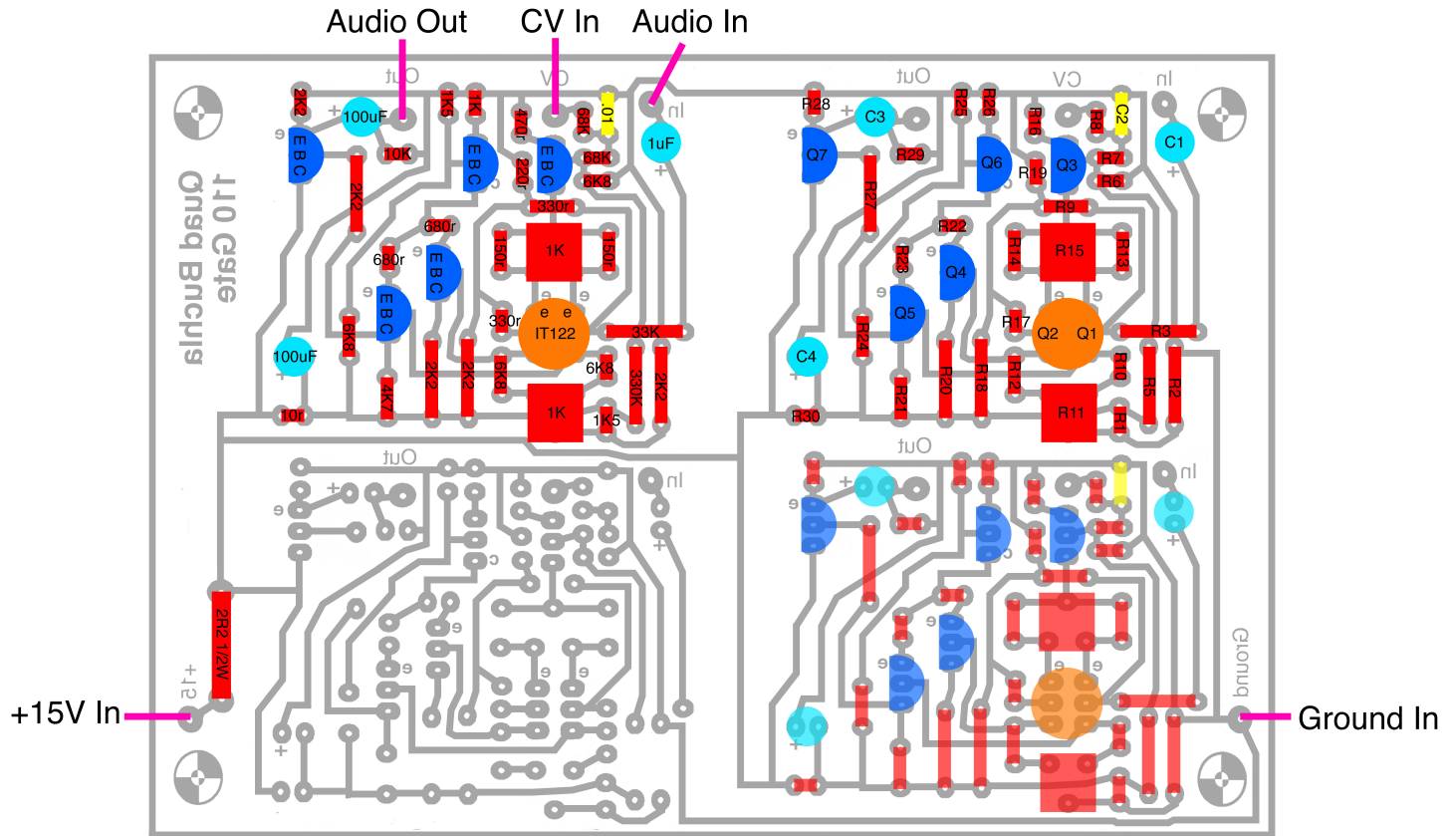
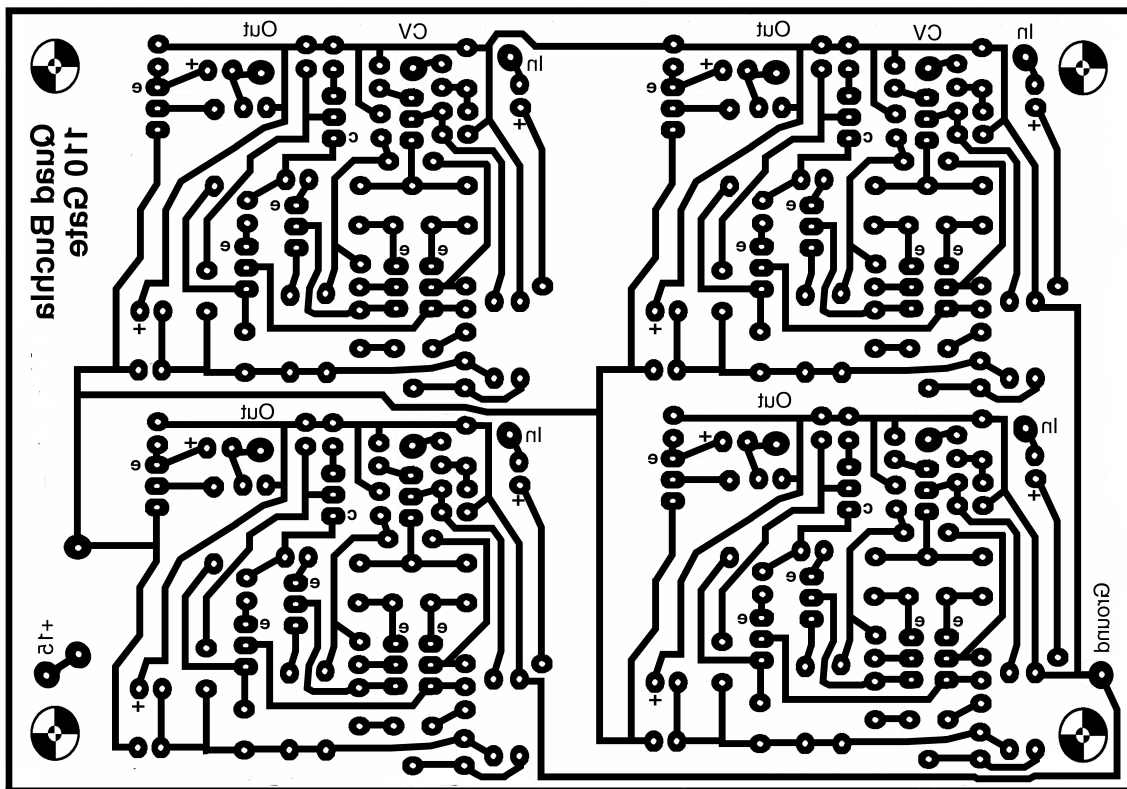


Quad Buchla 110 Gate (VCA)

The original is wired with a 50K audio pot after the input jack. It acts as an attenuator and does not open the VCA. The left lug goes to ground, the center to the PCB "In" pad, and the right potentiometer lug to the Input jack. You may wire an additional pot to +15V (right lug), center to the CV Input banana jack, and left lug to ground, to create an offset which will open the VCA manually.



- 2N3565 or 2N3904
- IT122 dual transistor or possibly two 2N3904
- Electrolytic capacitor. C2 = minimum 35V. C1 and C3 = minimum 15V.



Requires +15V supply rail.