

Alpha Series Skirted Knobs



AR-0-SK-7-M



AR-1-SK-7-M



AR-2-SK-7-M



AR-3-SK-7-M

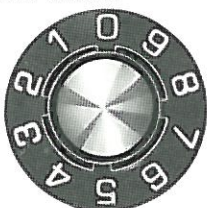


AR-4-SK-7-M

OPTIONAL TYPES



"0-10" Marking 30° spacing through 300°. Add "SK-10-M" to Part Number



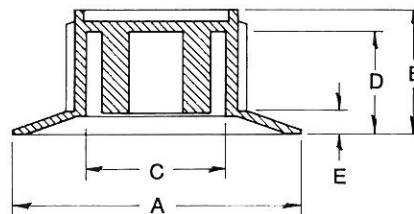
"0-9" Marking 36° spacing through 360°. Add "SK-9-M" to Part Number.



Inverted "0-10" Marking 30° Spacing through 300°. Add "SK-92-M" to Part Number



Custom Markings —
Quotation upon
receipt of drawing.



Part Number	A	B	C	D	E
AR-0-SK-M	.90	.60	.50	.50	.04
AR-1-SK-M	1.12	.60	.50	.51	.09
AR-2-SK-M	1.50	.64	.81	.51	.09
AR-3-SK-M	1.75	.66	.90	.55	.09
AR-4-SK-M	2.00	.67	1.14	.56	.09

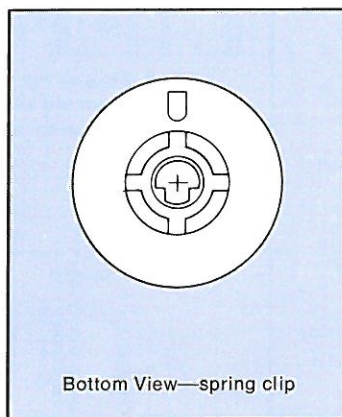
SHAFT HOLE AVAILABILITY

Spring Clip

.125 x .078 (AR-0-SK-M only), .187 x .156, .250 x .156, .250 x .218 and 6mm x 4.5mm spring clips are standard. Other configurations are available upon request for a nominal tooling charge.

Knurled Type

EIA 24 tooth for split metal shaft, .245 knurl for solid nylon shaft are standard. Other knurls are available for a nominal tooling charge.



Bottom View—spring clip



Chrome-plated finish available
on special order.

Note: Shaft hole size and type must be specified. This information is not included in the part numbers.