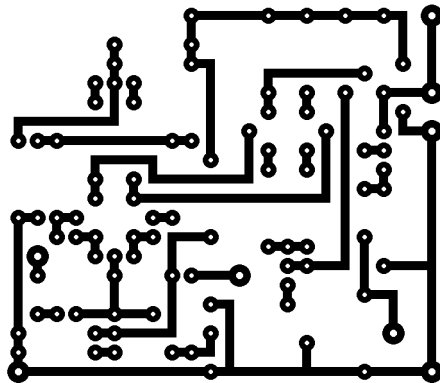
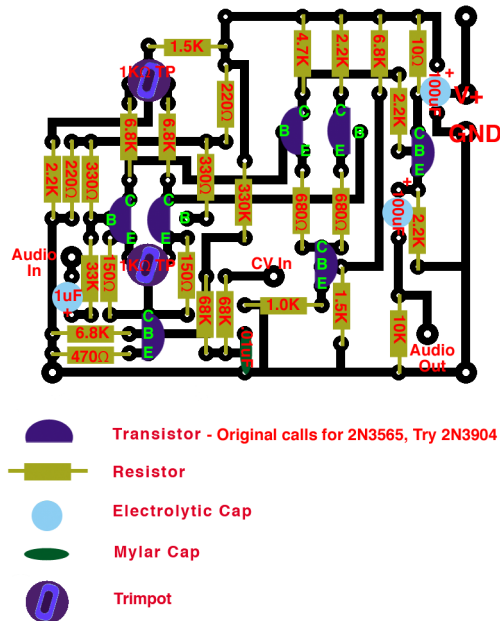


# Buchla 110 VCA PCB



Originally this design used 2N3565 transistors, and an IT122 matched pair for pair on the left. 2N3904s or any standard NPN will probably work for all of them. Can also try MAT02, etc... as a sub for the matched pair.

PCB layout by Romeo Fahl. Revised 08/12/09. For personal use only!!!