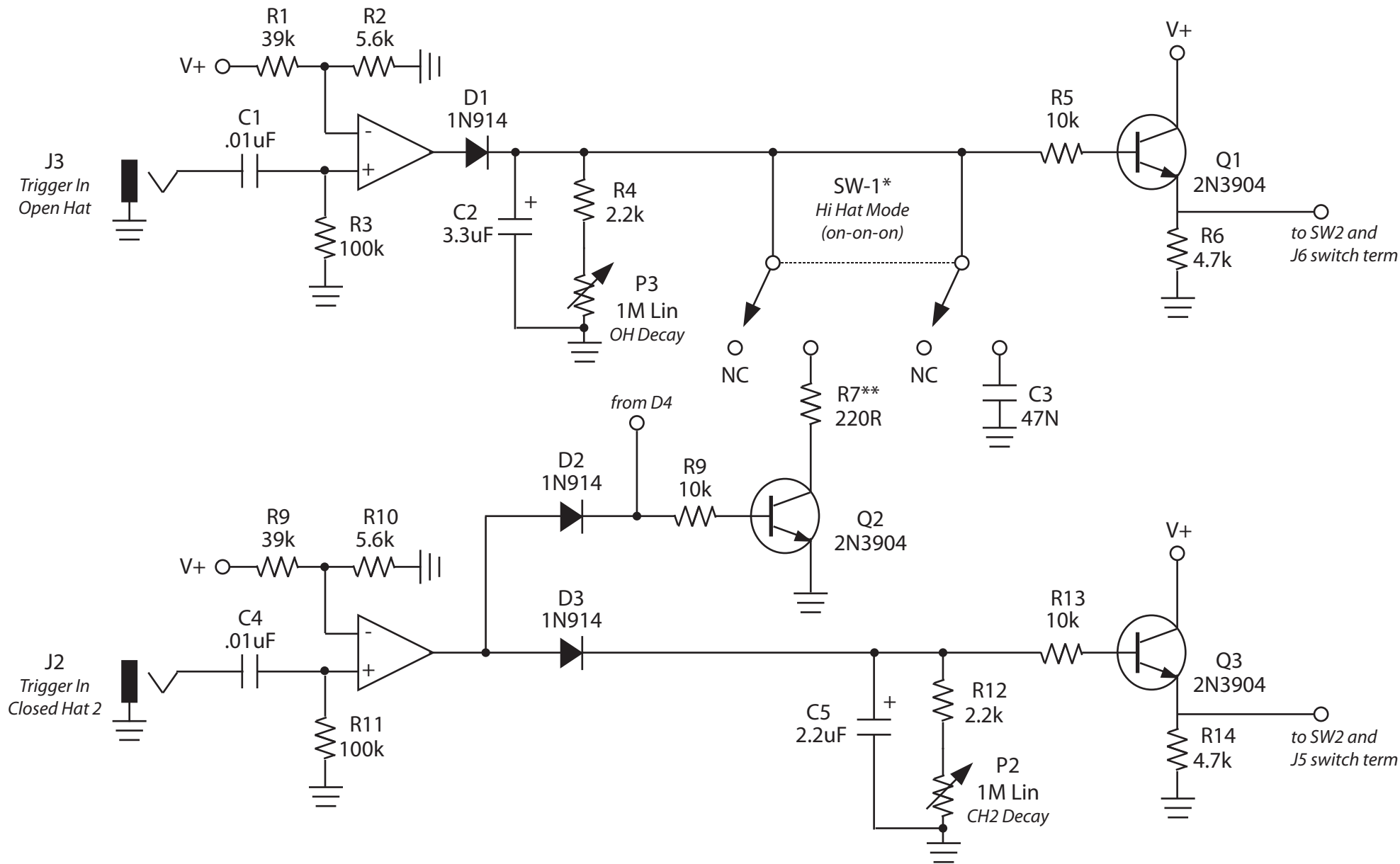


### 3x Percussion and Hi Hat EG / CV Mixer



\*SW-1 is wired such that the connection to R7 is made in middle and high positions; connection to C3 in high position only. (Does not use a jumper between any terminals.)

\*\*R7 could be replaced by a 2.2k pot or trimpot wired as a variable resistor. If a pot, put a 100R in series with it.

Note: This module borrows from Thomas Henry (Trigger and EG), MFOS (DC Mixer), from a Ken Stone Psycho LFO (glide).